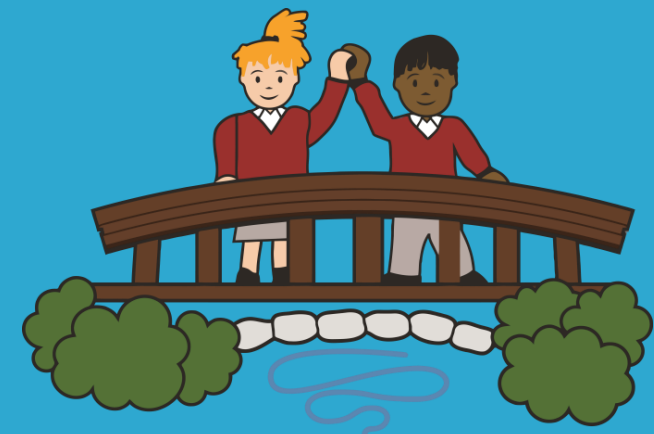




Subject
Information



Soaring to success

SMSC Early Years

In Early Years, the curriculum is planned to offer exciting experiences that enable children to show curiosity, show imagination and creativity.

Learning environments provide opportunities for children to reflect upon, consider, ask questions and celebrate the world around them.

Children are taught:

- The rules and routines of the school
- Awe and wonder around natural phenomena in our world, the wonders and mysteries of life- including animals and plants- cultivate and appreciation of beauty in nature. We promote this through natural environments and forest schools
- Children are guided to use reflective practice including growth mindset questions
- Children develop their self-esteem and self-awareness, valuing their own and other's ideas and aspirations
- They develop sensitivity and responsiveness to others needs and wants
- Care of pets/ environment through themed days
- Celebrations of faiths and cultures through RE and Equality and Diversity days
- Areas that promote talking and thinking
- Exploring how experiences evoke feelings/ emotions (for example through music or a story)