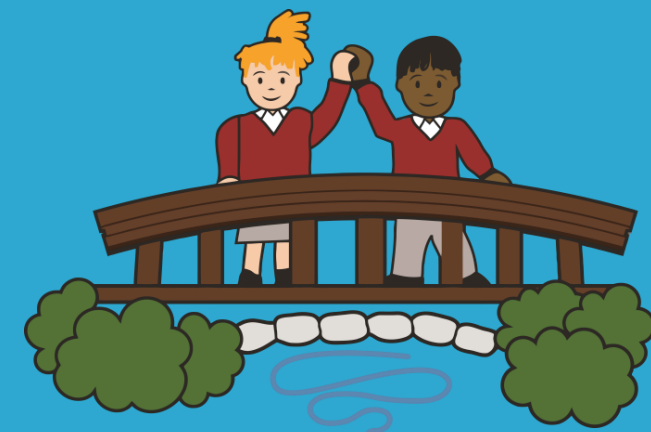




Subject
Information
Year 1/2



Soaring to success

PSHE Key Stage 1

During Key stages 1, PSHE education offers both explicit and implicit learning opportunities and experiences which reflect pupils' increasing independence and physical and social awareness. It builds on the skills that pupils started to acquire during the Early Years Foundation stage (EYFS) to develop effective relationships, assume greater personal responsibility and manage personal safety, including online.

Children are taught:

- Basic skills for staying healthy and safe and for behaving well.
- To take some responsibility for themselves and their environment.
- About their own and other people's feelings and become aware of the views, needs and rights of others.
- Social skills such as how to share, take turns, play, help others, resolve simple arguments and resist bullying.