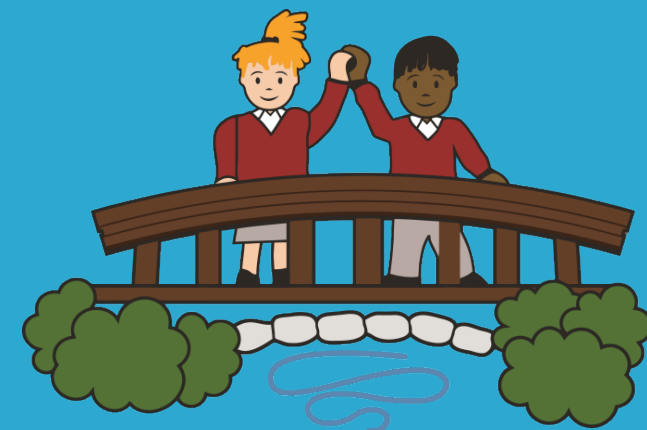




We place great importance on enrichment at Kentmere.



Soaring to success

SMSC Enrichment

At Kentmere Academy, we believe that our whole-school vision, ethos and aims reflect our intention to incorporate SMSC and British Values into the very fabric of our school and daily life. This is not a subject but something that is everywhere in our school: in lessons, in the playground, in our relationships, in our thinking, in our values. Opportunities for enrichment are entwined in almost every subject, visit and trip that Kentmere offers in the wider curricular diet, such as trips to local places of worship, Crucial Crew, Robinwood, Career talks and half termly trips linked to topics. All of these offer children the chance to develop their social, moral, spiritual and cultural awareness.

Sunshine Day is a themed day every half term where children cover PSHE, SMSC and British Values. The school has set out a timetable of themes to ensure these are covered throughout the year. All children are invited to wear yellow clothing to celebrate, and parents are invited into classrooms to experience their children's learning first hand. These themed days tackle thought provoking topics and promote topical debates about current issues in the world, adding to children's cultural capital.

Common themes are:

- Mental Health and Wellbeing
- Anti Bullying
- E Safety
- LGBT Awareness
- Relationships
- British Values